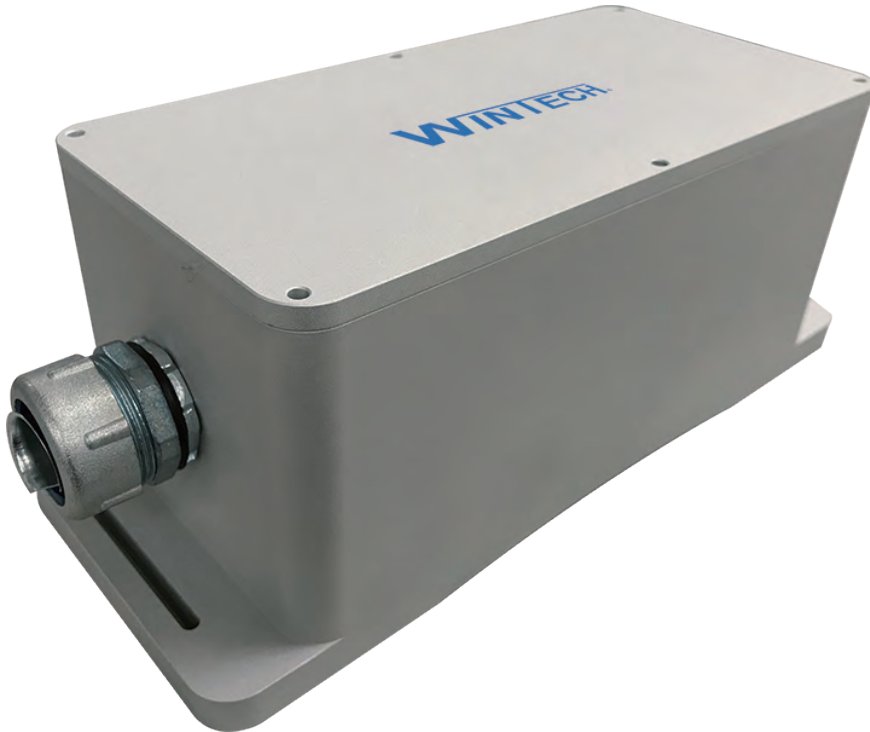


## Active Ultra High Frequency Sensor (UHF-GIS)



### 主動式超高頻感測器 (UHF-GIS Sensor)

- ▶ 具有響應頻寬高、重量輕、體積小之局部放電感測器。
- ▶ 工作頻率範圍在300MHz-3GHz，符合局部放電所產生的電磁波頻率範圍。
- ▶ 堅固的外型與便於安裝於GIS定點監測。
- ▶ 本身設計有效排除不必要的雜訊與干擾。
- ▶ 適用於GIS及EBG量測。

### ACTIVE ULTRA HIGH FREQUENCY SENSOR (UHF-GIS Sensor)

- ▶ The partial discharge sensor with high response bandwidth, light weight, small size.
- ▶ The operating frequency range is 300MHz-3GHz, which meets the frequency range of electromagnetic wave generated by partial discharge activities.
- ▶ Sturdy appearance and easy to install in GIS for monitoring purpose.
- ▶ The design effectively eliminates unnecessary noise and interference.
- ▶ Suitable for GIS and EBG measurement.

## Active Ultra High Frequency Sensor (UHF-GIS)

主動式超高頻感測器技術規格表

型號	UHF-GIS
工作頻帶	300MHz~3000MHz ( V.S.W.R < 3.5 )
輸出接頭	BNC
主動靈敏度	< -60 dB
尺寸(寬x高x厚)	195mm(L) x 82mm(W) x 78mm(H)
重量   供電源	800 ± 10g   DC 5V

局部放電在線監測儀&多重物理量感測器應用於高壓設備對照表

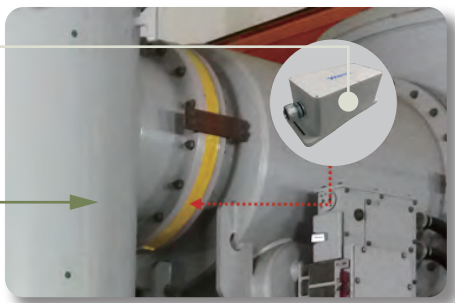
Model	PDD-SA	HFCT	UHF-BB	TEV	UHF-OTS	UHF-GIS
被測設備						
GIS	●	●		●		● Spaser Use
油浸式變壓器	●	●		●	● 69KV 以上	
模鑄式變壓器	●	●	●			
高壓配電盤	●	●	●			
電力電纜終端匣	●	●		●		
電力電纜接續匣	●	●		●		
匯流排	●		●	●		
發電機高壓馬達	●	●		●		



感測器固定於間隔器上

安裝示意

頻譜響應



V.S.W.R

